

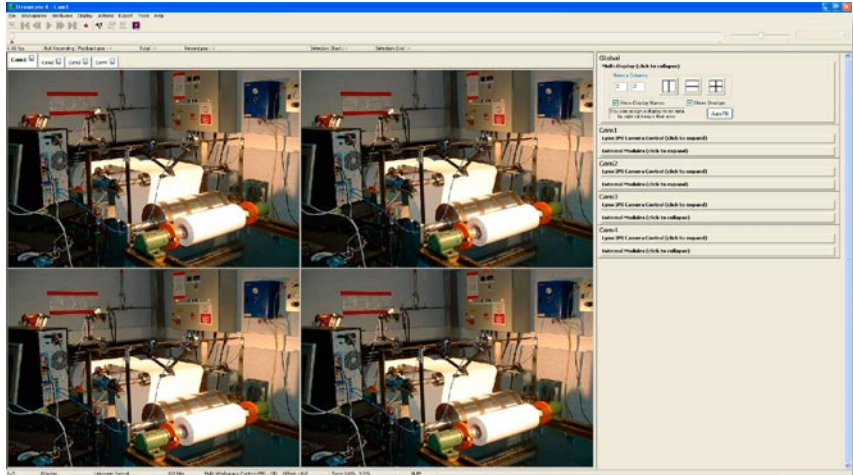
# StreamPix

## Digital Video Recording Software

**New StreamPix 4  
for multiple camera  
acquisition**

### Applications :

- Motion analysis
- Image archiving
- Flow analysis
- Medical imaging
- Web inspection
- Astronomy



**Example : Record multiple  
cameras simultaneously.\***

### Features :

- Real time video recording to PC hard disk or RAM\*
- Acquire, in monochrome or color, from IEEE1394 (Firewire), analog, digital, CameraLink and USB2 cameras\*
- Acquire images as AVI movies, uncompressed or compressed with any Windows-compatible CODEC installed\*
- Export images as BMP, TIFF, multi-TIFF, JPEG, PNG, FITS or AVI
- VCR style controls : Record, Play, Rewind, Fast-Forward, Step and Pause
- Time stamps
- Color balance, histogram, and other real time image processing functions
- Supports various frame grabbers and cameras
- For Windows XP™, Vista™, 32 and 64 bits.

\* Depending on hardware configuration

**Turnkey systems available  
including computer, software  
and integration.**

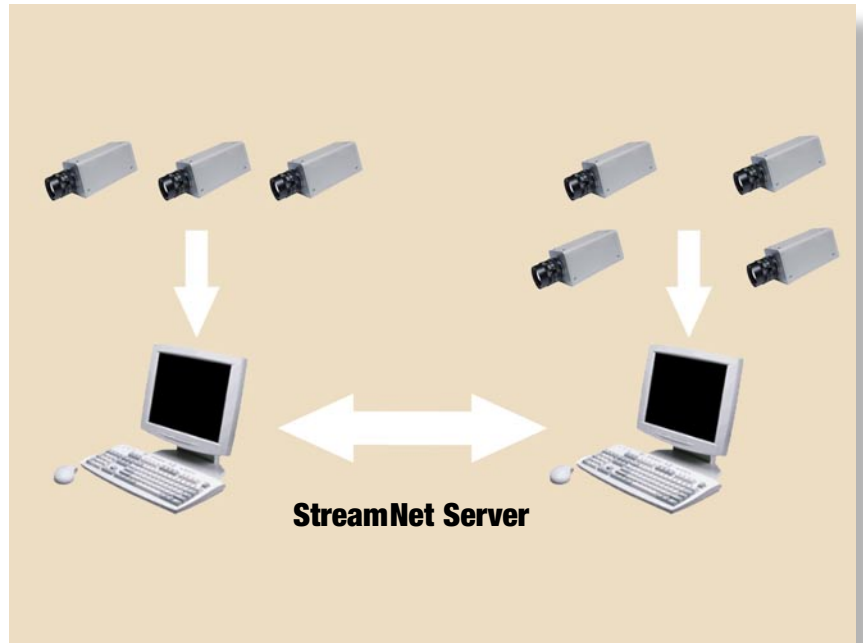
# Network Control and Multiple Camera Acquisition

## Features :

- Grab and view multiple sequences simultaneously
- Includes Macro Builder for time lapse video acquisition
- Uses standard, off-the-shelf technology.

## Long-distance grab :

- Uses gigabit ethernet protocol for long distances between camera and computer.



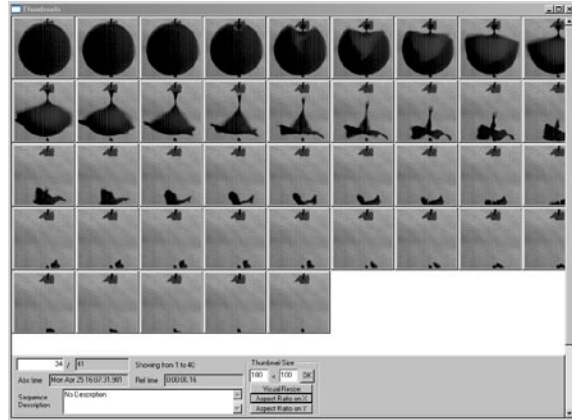
Multiple camera acquisition on multiple computers connected through StreamNet Server.

## Additional Features :

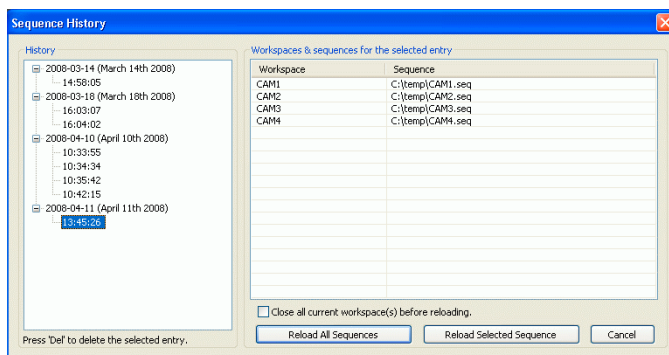
- Time Lapse recording : Provides multiple ways to control recording
- Time stamping :
  - Absolute time stamp
  - Relative time stamp
- Compression :
  - For AVI files : Any installed WDM CODECS (Windows compatible) such as MPEG1, MPEG2, DIVX, VCD, etc.
  - For sequence files : Uncompressed, Lossy JPEG, RLE, Huffman and LZ.
- Record video and audio simultaneously
- Add time stamps, text comments or bitmap images as overlays on each image
- Continuous video loop recording
- Windows leveling
- Bayer conversion
- Gamma correction
- Color balance and image de-interlacing.

## Trigger on event or level controlled by :

- Camera input trigger line
- Frame grabber input trigger line
- Computer keyboard
- Dedicated trigger input via computer USB port.



View entire sequence at a glance with the thumbnail viewer.



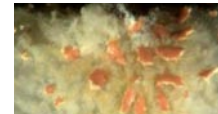
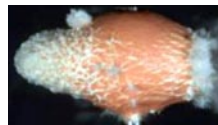
Sequence history

## Multiple Trigger Options :

- Acquire each image upon a trigger event
- Acquire on positive or negative edge
- Acquire while an external input signal is high or low.

## High-speed Acquisition :

- Up to 650 MB/sec



## StreamPix Scripting

Define complex recording rules, for example :

- Record 50 images after receiving positive edge on computer USB input
- Record for 2 minutes after receiving negative edge on computer USB input
- Record every 2 images while frame grabber input is low
- When USB input receives a positive edge, capture 30 more images then stop the recording.



## Also available

### Hermes API :

- StreamPix is built upon the Hermes API
- The API is a set of easy to use C++ libraries
- Modules for grabbing, scripting, exporting (BMP, JPEG, TIFF, PNG, AVI), recording & playback of sequence files, display and more
- Available with all StreamPix supported cameras & frame grabbers
- Get started fast with extensive documentation, demos & sample projects.

### Plugin SDK :

- Save input data from third-party sources such as outside temperature, atmospheric pressure or GPS positioning along and in sync with your images in a sequence
- Visual C++ compatible
- Custom development services available.

---

## Supported Hardware

StreamPix supports a wide choice of cameras and frame grabbers from many manufacturers including *Allied Vision Technologies, Basler, BitFlow, Coreco, Cooke, Dage MTI, Diagnostic Instruments, Epix, Euresys, Hamamatsu, HasoTec, Hitachi, Imperx, Integral, ISG Imaging Solutions Group, Jai, Lumenera, Jenoptik, Matrox, Micropix, Olympus, Optronics, Pixelink, Pixera, Pleora, PTGrey, Prosilica, Pulnix, QImaging, Roper, Santa Barbara Focal Plane, Silicon Imaging, Sony, Sumix, Scion and Tattile.*

For a complete and up to date list of supported hardware, please visit our web site at :

**[www.norpix.com](http://www.norpix.com)**

Camera and frame grabber support updated continually. Contact Norpix to request support for your camera and frame grabber.

**NorPix also provides  
custom imaging and  
turnkey solutions.**

### **NorPix Inc.**

1751 Richardson, Suite 6117  
Montreal, Quebec  
H3K 1G6  
Canada

Web site : **[www.norpix.com](http://www.norpix.com)**

Email : **[sales@norpix.com](mailto:sales@norpix.com)**

Sales : (514) 907-1588

Admin : (514) 846-0009, ext. 23

Support : (514) 846-0009, ext. 26

Fax : (514) 846-0117